

From: Sandra Schwarzmann
For Immediate Release: June 17, 2010
Contact: Sandra Schwarzmann (858) 481- 2155 x20
sandra@northcoastrep.org
www.NorthCoastRep.org

Press/Opening Night: July 3, at 8:00PM
RSVP required.

North Coast Repertory Theatre is proud to present:
The San Diego Premiere of a two-time Tony Award winning musical.
The 25th Annual Putnam County Spelling Bee

(Image to follow of show)

Music and lyrics by William Finn
Book by Rachel Sheinkin
Conceived by Rebecca Feldman
Directed by Rick Simas
July 3 - July 25, 2010
Previews: June 30 - July 2, 2010

Some mature content. Recommended for audiences 13 and up.

"Can you spell i-r-r-e-s-i-s-t-i-b-l-e? 'Spelling Bee' is riotously funny and remarkably ingenious. Gold stars all around," says the New York Times. Prepare to feel the angst of fidgety adolescents who prove that the only thing worse than being 13 is being 13 while attempting to correctly spell "pyrrhonism". This two-time Tony Award winning hit musical celebrates the mania of competition as the funniest most lovable and sardonically nerdy contestants compete for the Spelling Bee title. Six wacky misfits with steely ambition strive to define themselves apart from their crazy families as they confront the pitfalls of puberty. Anyway you spell it; ***THE 25TH ANNUAL PUTNAM COUNTY SPELLING BEE*** is side-splittingly *F-U-N-N-Y*.

The Cast of the 25th Annual Putnam County Spelling Bee includes:

The Adults

Melinda Gilb* as Rona Lisa Perettie
Phil Johnson* as Douglas Panch
Robert Barry Fleming* as Mitch Mahoney

The Spellers

Brandon Joel Maier as Chip Tolentino
Sarah Errington as Logainne Schwarzandgrubenierre
Jacob Caltrider as Leaf Coneybear

Omri Schein* as William Barfee
Cashae Monya as Marcy Parks
Nicole Werner* as Olive Ostrovsky

The Musicians

Steven Withers is Musical Director/Keyboards
Matt Best on Woodwinds
Tom Versen on Percussion

*Member of Actors' Equity Association

From Director Rick Simas on *The 25th Annual Putnam County Spelling Bee*:

“While musicals are derived from many sources—classic books, notable plays, successful movies—perhaps none is more unique than the source for William Finn and Rachel Sheinkin’s musical, *The 25th Annual Putnam County Spelling Bee*. Finn’s involvement began with a phone call from his friend, playwright Wendy Wasserstein, whose nanny was appearing in a comedy troupe called “The Farm.” One of the improvised pieces that the group performed was called *C-R-E-P-U-S-C-U-L-E*, which took as its subject matter children competing in a spelling bee. This, to Wasserstein, seemed like the perfect source material to be developed into a William Finn musical. The composer-lyricist wisely agreed, and with writer Rachel Sheinkin, he set about developing *C-R-E-P-U-S-C-U-L-E* into a full-length musical entertainment. The resulting work was first performed in a workshop production at the Barrington Stage Company in February 2004, where it was well received, leading to a more fully developed version that was produced by the company that summer under the title *The 25th Annual Putnam County Spelling Bee*. The show was a success, and Finn’s longtime collaborator, writer-director James Lapine, was engaged to direct the New York production, which began previews at off-Broadway’s Second Stage on January 11, 2005. It was a critical and commercial hit, ensuring its transfer to Broadway, where it opened at the Circle in the Square Theatre on May 2, 2005, and ran for 1,136 performances.

I first saw this charmingly quirky show off-Broadway on a snowy afternoon in February 2005. I immediately fell in love with its nerdy characters, offbeat score, and the ingenious way that the creators used the audience to draw them into the competition. I hoped one day to direct a production of this wonderful little show and am thrilled to have the opportunity to do so here at North Coast Repertory Theatre, a perfect venue for *The 25th Annual Putnam County Spelling Bee*.”



William Finn (Music and Lyrics) is the writer and composer of *Falsettos*, for which he received two Tony® Awards, Best Book of a Musical (with James Lapine) and Best Original Score. He has also written and composed *In Trousers*, *March of the Falsettos* and *Falsettoland* (Outer Critics Circle Award for Best Musical, two Los Angeles Drama Critic’s Awards, two Drama Desk Awards, the Lucille Lortel Award, and Guggenheim Fellowship in Musical Composition). His most recent projects include *Elegies*, *A Song Cycle* (Lincoln Center) and *The 25th Annual Putnam County Spelling Bee* which ran on

Broadway and has been produced nationally and internationally. Mr. Finn provided the music and lyrics for Ace Award-winning HBO cartoons and has written for *Vogue*, *Harper’s Bazaar* and *The New Yorker*. A graduate of Williams College where he was

awarded the Hutchinson Fellowship for Musical Composition, Finn now teaches a weekly master class at the NYU Tisch Graduate Program in Musical Theatre Writing.



Rachel Sheinkin (Book) collaborated with William Finn and the company to adapt *C-R-E-P-U-S-C-U-L-E* into this musical (Tony®, Drama Desk awards). Other music theatre collaborations include *Striking 12* (TheatreWorks, Palo Alto); *Blood Drive* (O'Neill National Music Theatre Conference) and *Serenade* (upcoming Baryshnikov Arts Center). She has been a Manhattan Theatre Club playwriting fellow and is currently an adjunct faculty member at NYU's Graduate Musical Theatre Writing Program. Thanks to Rebecca Feldman et al. for this opportunity.



Rebecca Feldman (*Conceived By*) won a Lucille Lortel Award, Drama Desk and Tony® Nomination for Best Musical for *The 25th Annual Putnam County Spelling Bee*. She directed its world premiere at Barrington Stage Company in the summer of 2004. She conceived, directed and performed in *C-R-E-P-U-S-C-U-L-E*, the play upon which *The 25th Annual Putnam County Spelling Bee* is based, with her company The Farm. She has directed and performed in New York and regionally for the past 10 years including: New York Fringe Festival (Best of Fringe '98), Soho Rep, Adobe Theatre, New Dramatists, Mabou Mines and various downtown venues.



Rick Simas (Director) North Coast Repertory Theatre: *The Fantasticks*, *No Way to Treat a Lady*, *The Big Bang* and *I Love You Because*. Previously, he directed *Good News*; *No, No, Nanette*; *Promises, Promises* and the West Coast premiere of *Smile*, which collectively won 13 Bay Area Theatre Critics Circle Awards. Other directing credits include the West Coast premiere of *Goblin Market* at UC Berkeley, and the East Coast premiere of *The Death of Meyerhold* at the Studio Theatre. At San Diego State University, he directed *Triumph of Love*, *Bat Boy*, *Honk!* and *Zombie Prom*, which collectively won 8 Patti Awards. At SDSU, he also directed the San Diego premieres of *A New Brain* and *The Musical of Musicals*, and the Southern California premiere of *A Man of No Importance*. At the Poway Center for the Arts, he directed *Master Class*; at Diversionary Theatre, the San Diego premiere of *When Pigs Fly*; and at the Old Globe Theatre, he assisted Tina Landau on the West Coast premiere of *Floyd Collins*. At the University of Judaism, he directed Jerry Herman's *Milk and Honey*, and created a series of successful cabarets and concerts, including *From Berlin to Brooks: How Jews Made Broadway*; *Berlin, Bernstein and Bock: Boychiks on Broadway*; and *Richard Rodgers: A Centennial Celebration*. Rick holds a Ph.D. in Dramatic Art from UC Berkeley and has been a faculty member of the American Conservatory Theatre (ACT) in San Francisco and the American Musical and Dramatic Academy (AMDA) in New York. For the past 18 years, he has taught in San Diego State University's MFA Musical Theatre Program—currently the only such graduate program of its kind in the country. He thanks David Ellenstein; the talented cast,

staff, musicians and crew of *Spelling Bee*, and everyone at North Coast Repertory Theatre.



Melinda Gilb* (Rona Lisa Peretti) Broadway: *Singing in the Rain* (original cast). Off Broadway: *Back to Bacharach and David*, (original cast), *Suds* (Original cast and co-author). 1st National tour: Joseph Papp's *The Pirates of Penzance*. Pantages Theatre: *How The Grinch Stole Christmas, Mama Who*. Old Globe: *How The Grinch Stole Christmas* (Original Mama Who), *Suds*, Starlight Theatre: *Sweeney Todd* (Mrs. Lovet, Craig Noel Award), *Annie* (Miss-Hannigan). North Coast Rep: *The Smell of the Kill*. San Diego Repertory: *Miss*

Witherspoon, Always Patsy Cline, Six Women with Brain Death. Cygnet Theatre: *The Receptionist*. Welk Resort Theatre: *Thoroughly Modern Mille* (Mrs. Meers). Melinda and Steve Show: New York, Los Angeles and San Diego. Television: Featured on *The Full Wax* and *Ruby Takes a Trip* (BBC-1); Guest star on *Becker* (CBS). Melinda will soon be seen in the role of Dolly Levi in *Hello Dolly* at Starlight Theatre, Favorite role, Mama to her 7 year old son Knight.



Phil Johnson* (Douglas Panch) BROADWAY: *Les Miserables*. NATIONAL TOURS: *Sunset Boulevard, Miss Saigon*. TELEVISION: 'Notes From the Underbelly', ABC. SAN DIEGO: *Don't Dress for Dinner, Leading Ladies & Pageant*, NCRT; *The New Century*, *Diversionsary; How the Grinch Stole Christmas*, Globe; *Christmas Carol*, S.D. Rep; *True West*, Sledgehammer. 2006 Actor's Fest 'Best of Fest': *NEMESIS & Travis & Phil*. Original Comedies: San Diego, LA, Chicago- *NEMESIS* (w/ Mike Sears), *True Lounge, Say Cheese*.

Member: Acme Comedy Theatre, L.A. www.philjohnson.net



Robert Barry Fleming* (Mitch Mahoney) acting credits include *Ragtime* and *Stand-Up Tragedy* (Broadway), *Insurrection: Holding History* (The Public/NYSF), *Good Boys* (Mo'olelo Performing Arts Company), *King John, Scapin, A Midsummer Night's Dream, Julius Caesar, Loves Labor's Lost, The White Devil, She Stops to Conquer* (Alabama Shakespeare Festival) and productions at the San Jose Rep, A Contemporary Theatre, The Old Globe, The Mark Taper Forum, and the Guthrie. Film/TV credits include *L.A. Confidential, Twilight of the*

Golds, a series regular on the Disney Channel's *Adventures in Wonderland*, and numerous guest spots. Robert won a 2008 Craig Noel Award for Outstanding Featured Performance by a Male in a Musical for his performance in *Ain't Misbehavin'* at the San Diego Rep. Recent directing and choreography credits include: *All Shook Up* (Center Rep - SFBATCC Award for Best Direction of a Musical), *The Little Dog Laughed* (The Diversionsary), *Ain't Misbehavin'* (Center Rep - Shellie Award for Best Direction of a Musical), Erik Ehn's *The Saint Plays* including *Assent/Irish Love Ray* (world premiere - University of San Diego). Upcoming directing/choreography credits include *She Loves Me* (fall 2010) and *Blues in the Night* (spring 2011) both at the Center Rep. Robert Barry is an Associate Professor and Chair of the Theatre Arts Department at the University of

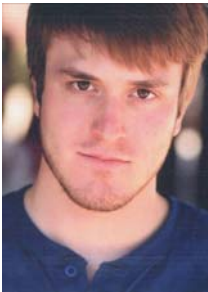
San Diego.



Brandon Joel Maier (Chip Tolentino) Brandon is very excited to be making his NCR debut in *Spelling Bee*. NCR: *No Way to Treat a Lady* (Morris Understudy), *I Love You Because* (Swing/Assistant Director). Other credits include *Into the Woods* (Baker), *Birds of Paradise* (Homer), *A Class Act* (Marvin Hamlisch), *The Grapes of Wrath* (Jim Casy), *In the Beginning* (G-d), and *The Musical of Musicals* (Big Willy/Jutter/Bill). Brandon founded and coached of the I H Pi improv team at San Diego State University. He has recently completed his MFA in Musical Theatre at SDSU, and is proud to be a member of the class of 2010. Brandon would like to thank his family for all their constant support.



Sarah Errington (Logainne Schwarzandgrubenierre) is excited to be working with North Coast Rep for the first time! Sarah holds a BA in Theater Arts from Azusa Pacific University and has performed all over the San Francisco and Los Angeles areas. Favorite roles include: Ruby (*Dames at Sea*), Anybodys (*West Side Story*), Cleo (*Most Happy Fella*), Sally (*You're a Good Man, Charlie Brown*), and Miss Flannery (*Thoroughly Modern Millie*). Thanks to Rae and the family for love and support. Look for her in New Village Arts upcoming production of *Into the Woods* as Cinderella.



Jacob Caltrider (Leaf Coneybear) For NCR: *A Christmas Carol* (Young Scrooge). Elsewhere: *Rebels* (Dennis); *The Old Globe: Sweeney Todd* (Anthony), *The History Boys* (Timms), *A Christmas Carol* (Young Scrooge, Peter Cratchit); Cygnet Theatre: *Yank!* (Svenson), *Twist!* (Twist), *The Daddy Machine* (Stonewall); Diversionary Theatre: *The Intelligent Design of Jenny Chow* (Todd), Carlsbad Playreaders.



Omri Schein (William Barfee) Omri is happy to return to NCR where he was previously seen in the 2008 production of *The Big Bang*. San Diego credits include: *When Pigs Fly* (Diversionary Theatre) and *Beauty and The Beast* and *Seussical* (Moonlight Stage). Elsewhere: *A Funny Thing...* (Triarts, CT), *Dear World* (Kalliope, OH), *Hell Belle's* (NYC), *The People Vs. Mona* (both at the York Theatre and Abingdon Theatre, NYC- as well as the original cast recording.) Omri also writes musicals: *Manscape* (which has had two readings) and the recently completed *Bedfellas*. Omri has an MFA in Musical Theatre from SDSU and is an adjunct faculty member at Marymount Manhattan College in NYC. Thanks to Eva Triefer for her generous hospitality. www.omri-schein.com.



Cashae Monya (Marcy Parks) Cashae Monya is thrilled to be making her North Coast Rep Debut! Recent credits include: *Hip Pocket* (Lamb's Players), *High School Musical* (Starlight Theatre), *Zanna, Don't* (Ariel Performing Arts) and *Memphis* (La Jolla Playhouse/The 5th Avenue Theatre). Monya would like to say "Te Amo Mucho!" to all who have given her the courage to pursue her passion fearlessly and FIERCELY. Enjoy!



Nicole Werner* (Olive Ostrovsky) Orange County High School of the Arts; BA, UCSD; MFA, SDSU; Broadway Palm Theatre: *Pajama Game* (Mara). SDSU: *Bat Boy* (Shelley Parker), *A Man of No Importance* (Adele Rice). Welk Resort Theatre: *42nd Street* (Peggy Sawyer); *Fiddler on the Roof* (Chava); *Cinderella* (Cinderella). South Bay CLO; Guest Artist, San Diego Chamber Orchestra; AEA. nicolewerner.net



Steven Withers (Musical Director) Steven Withers, of San Diego, graduate Point Loma High School. University of Cincinnati's College/Conservatory 1980-85. Broadway: *Jane Eyre* (2000-2001). Original Broadway Cast album: *Jane Eyre* (Sony Classical). Tour: *An Evening With Michael Crawford* (1998): 30 venues including Radio City Music Hall, Hollywood Bowl, and *The View* with Barbara Walters. Live CD: *An Evening With Michael Crawford* (Atlantic Records). Regional: *Jane Eyre* (La Jolla Playhouse 1999), *The Full Monty* (Old Globe 2000). Workshops: *A Man Of No Importance* (Lincoln Center Theater), *Daddy-Long-Legs*, John Caird, Director, with David Parsons Dance, London (2002) and New York (2003). Local: *Forever Plaid* (Theater in Old Town 1995-1998). Music Director: *It's A Fabulous Life!* (Diversions Theatre), *The Big Bang* (North Coast Rep), *Jacques Brel...* (North Coast Rep), *I Love You Because* (North Coast Rep). Partnered with Marc d'Hondt since 1993.



Tom Versen (Drums/Percussion) NCRT: *Back to Bacharach and David*, *Jacques Brel*, *I Love you Because* (San Diego Rep: *Six Women with Brain Death*, *Always Patsy Cline*, *Menopause the Musical*. Lamb's Theatre: *Boomers*, *The Secret Garden*, *The Mysteries of Edwin Drood*. Off Broadway: *Suds*. Thanks to all of you who support the arts, and special thanks to my friends and family. Enjoy the show...



Matt Best (Woodwinds) Matt Best is a native Iowan who settled in San Diego two years ago after traveling around the world for over five years as a Musical Director and musician for Princess Cruises.

Before that he studied jazz at University of North Texas and was a professional musician in the Dallas area. Since moving to San Diego he has worked with San Diego Junior Theatre, J*Company Youth Theatre, Moonlight Stage Productions, San Diego Repertory Theatre, Francis Parker School, and is now happy to be working with North Coast Repertory Theatre. Matt is a full time musical instrument technician for Sweetwater UHSD.



Kevin Koppman-Gue (Understudy) Kevin Koppman-Gue is very excited to be working on this fantastic production of *Spelling Bee*. Previous credits: *Speech and Debate*, *Moscow* (Diversionary Theatre), *Into the Woods* (SDSU Theatre), *Romeo, Romeo & Juliet* (Vox Nova Theatre Company), *The History Boys* (Cygnet Theatre), *A Streetcar Named Desire* (ion theatre company), *How I Learned to Drive*, *Everything Will Be Different* (Lynx Performance) and *The Winslow Boy* (Lamb’s Players Theatre). Kevin has also performed with 6th @ Penn, Fritz Theatre, Starlight Musical Theatre, and Sledgehammer. Kevin would like to thank his family and friends for

their continued love and support. Kevin will next appear in North Coast Rep’s Production of *Becky’s New Car* as Chris.

PLA&E, Putnam County School Gymnasium

PLA&E, Now

AFTER

- “The 25th Annual Putnam County Spelling Bee” Rona, Chip, Logainne, Leaf, Barfee, Marcy & Olive
- “Spelling Bee Rules” Panch, Rona, Mitch & Spellers
- “My Friend, the Dictionary” Olive, Rona & Spellers
- “Pandemonium” All
- “I’m Not That Smart” Leaf
- “Magic Foot” Barfee & All
- “Pandemonium” (reprise) Mitch & Spellers
- “Prayer of the Comfort Counselor” Mitch & All

There will be one 15-minute intermission.

AFTER

- “Chip’s Lament” Chip
- “Woe Is Me” Logainne & All
- “I’m Not That Smart” (reprise)..... Leaf
- “I Speak Six Languages” Marcy & Girls

“The I Love You Song”	Olive, Olive’s Mom & Dad
“Woe Is Me” (reprise).....	Logainne & Mitch
“Second/The Champion”	Barfee, Olive, Rona & All
“Finale”	All

FACT SHEET:

The cast for *The 25th Annual Putnam County Spelling Bee* includes:

The Adults:

Melinda Gilb* as Rona Lisa Perettie
 Phil Johnson* as Douglas Panch
 Robert Barry Fleming* as Mitch Mahoney

The Spellers:

Brandon Joel Maier as Chip Tolentino
 Sarah Errington as Logainne Schwarzandgrubenierre
 Jacob Caltrider as Leaf Coneybear
 Omri Schein* as William Barfee
 Cashae Monya as Marcy Parks
 Nicole Werner* as Olive Ostrovsky

The Musicians:

Steven Withers is Musical Director/Keyboards
 Matt Best on Woodwinds
 Tom Versen on Percussion

Understudy:

Kevin Koppen-Gue

*Member of Actors' Equity Association

The design team for *The 25th Annual Putnam County Spelling Bee* includes:

Rick Simas (Director)
 Steven Withers (Musical Director)
 Dave Massey (Choreographer)
 Marty Burnett (Scenic Design)
 Mike Buckley (Light Design)
 Peter Herman (Costumes/Hair/Wig Design)
 Chris Luessmann (Sound Design)
 Steve Negrete (Sound Mixer)
 Annie Bornhurst (Props and Set Dressing)
 John Finkbiner (Scenic Artist)

The crew includes:

Elizabeth Stephens* (Stage Manager)
 Aaron Rumley (Production Manager)
 Amanda Johnson (Production Assistant)

*Member of Actors' Equity Association

WHAT:

North Coast Repertory Theatre presents:

The 25th Annual Putnam County Spelling Bee

Music and lyrics by William Finn

Book by Rachel Sheinkin

Conceived by Rebecca Feldman

Directed by Rick Simas

FEATURING: Melinda Gilb*, Phil Johnson*, Robert Barry Fleming*,
Brandon Joel Maier, Sarah Errington, Jacob Caltrider, Omri Schein*, Cashae Monya ,
Nicole Werner* ,Steven Withers, Matt Best, Tom Versen
*Member of Actors' Equity Association

WHEN:

Previews: June 30th – July 2nd, 2010

Show Dates: July 3rd – 25th, 2010

WHERE:

North Coast Repertory Theatre

987 Lomas Santa Fe Drive, Solana Beach, CA 92075

TICKET PRICES: \$32 - \$50

HOW TO BUY TICKETS: Tickets for *The 25th Annual Putnam County Spelling Bee* are available only at North Coast Repertory Theatre in Solana Beach at 987 Lomas Santa Fe Drive, Suite D, 92075. For ticket information or reservations call (858)-481-1055 or visit www.northcoastrep.org. Box Office hours are Noon to 4pm daily and Noon to Curtain day of shows.

TICKET PRICES: Preview tickets are \$32.00, Opening Night tickets are \$50, Saturday evening and Sunday Matinee tickets are \$44.00 and Wednesday – Friday evening and Saturday Matinees are \$40.00. Student/Seniors and Military save \$3.00 and Subscriber single tickets are \$5.00 off.

SHOWTIMES: Show times are select Wednesdays at 7:00pm and select Saturday matinees at 2:00pm. Regular show times are Thursday - Saturday at 8:00pm and Sundays at 2:00pm and 7:00pm.

LISTING: "Can you spell i-r-r-e-s-i-s-t-i-b-l-e? 'Spelling Bee' is riotously funny and remarkably ingenious. Gold stars all around," says the New York Times. Prepare to feel the angst of fidgety adolescents who prove that the only thing worse than being 13 is being 13 while attempting to correctly spell "pyrrhonism". This two-time Tony Award winning hit musical celebrates the mania of competition as the funniest most lovable and sardonically nerdy contestants compete for the Spelling Bee title. Six wacky misfits with steely ambition strive to define themselves apart from their crazy families as they

confront the pitfalls of puberty. Anyway you spell it; ***THE 25TH ANNUAL PUTNAM COUNTY SPELLING BEE*** is side-splittingly *F-U-N-N-Y*.

IMAGES/PHOTOGRAPHS for *The 25th Annual Putnam County Spelling Bee* will be available on-line after June 30th at www.northcoastrep.org/press. If you need photos earlier arrangements can be made to have them sent directly to you if available. Photo credits go to Aaron Rumley. If you would like a script or program to be sent to you electronically please contact Sandra@northcoastrep.org or directly at 858-481-2155 X 20. Script is only available to press and not for general distribution.

ABOUT THE NORTH COAST REPERTORY THEATRE: North Coast Repertory Theatre is a professional equity theatre founded in 1982. For over 28 years, North Coast Rep has received critical acclaim from media and audiences alike. With the fifth largest operating budget of non profit theatres and employing the third most Actors' Equity Association members (the union of professional actors and stage managers) in San Diego, North Coast Rep continues to produce high quality, award winning theatre and has evolved into one of the area's leading performing arts organizations. Located in Solana Beach, California, NCR not only draws its audience from the North County region but 50% of its audience base resides in metro San Diego and throughout Southern California. Recognized for the quality of its work and its commitment to quality, this season will be performed on the Blakistone Stage, newly dedicated to North Coast Rep founders Olive Blakistone and her recently departed husband Tom, who passed away in March of 2009. David Ellenstein is now the Artistic Director and Leader of North Coast Repertory Theatre since 2003. His bio is as follows:

David Ellenstein (Artistic Director) A nationally recognized director and actor; David served as Artistic Director of the Los Angeles Repertory Company and the Arizona Jewish Theatre before joining North Coast Rep in 2003. Over 200 career productions include directing 22 shows at North Coast Rep, including *GHOSTS*, *THE TEMPEST*, *TALLEY'S FOLLY*, *THE DRESSER*, *OVER THE TAVERN*, *HALPERN & JOHNSON*, *THE CHOSEN*, and *ROMEO AND JULIET*. Elsewhere; *SONIA FLEW* starring Lucie Arnaz, *HALPERN AND JOHNSON* starring Hal Linden and Brian Murray, and *THE CHOSEN* starring Theo Bikel and John Lloyd Young at the Coconut Grove Playhouse. Other venues include the Paper Mill Playhouse, Alabama, California, Nevada, Great Lakes, Southwest, and Kingsmen Shakespeare Festivals, Laguna Playhouse, Meadow Brook Theatre, Arizona Theatre Company, Los Angeles Theatre Center, Portland Repertory Theatre, and Gaslamp Quarter Theatre Company.

#